



Model		
	GL35	GL35R
Resolution, pixels	384×288	
Pixel Size, μm	12	
NETD, mK	≤35	
Frame Rate, Hz	50	
Objective Lens, mm	35	
Field of View, °	7.5×5.7	
Magnification, ×	2.81 - 11.24	
Wifi & Recorder	√	
Amount of Built-in Memory, GB	32	
Display, pixels	1024×768 AMOLED	
Battery	Built-in 4400mAh + external replaceable 3300mAh	26650
Max. Battery Life, h	10	8
Weight, g	720	600
Detection Range, m (Target size:1.7m×0.5m, P(n)=99%)	1818	
Wavelength, mm	/	905
Max. Measuring Range, m	/	1000
Measurement Accuracy, m	/	±1m accuracy up to 1000



InfiRay Technology Co., Ltd.

Tel: 400-998-3088 Fax: +86-535-3410604
 Mail: infirayoutdoor@infiRay.com Web: www.infiRayoutdoor.com
 Add: 11th Guiyang Street, YEDA, Yantai 264006, P.R.China



Geni Series

GL35 / GL35R

The GL35R adopts the 12μm detector with 384×288 resolution, 35mm-focal-length objective lens, 1024×768 OLED display, and built-in range-finding module feature a range of 10-1000m with ±1 m accuracy when up to 1000m. It supports WIFI image transmission, electronic compass, motion sensor, up to 8 reticles, and other functions.

GL35 adopts the same core module as GL35R without built-in range-finding. It adopts the built-in battery and an external replaceable battery pack power supply mode, the battery life is 10h.



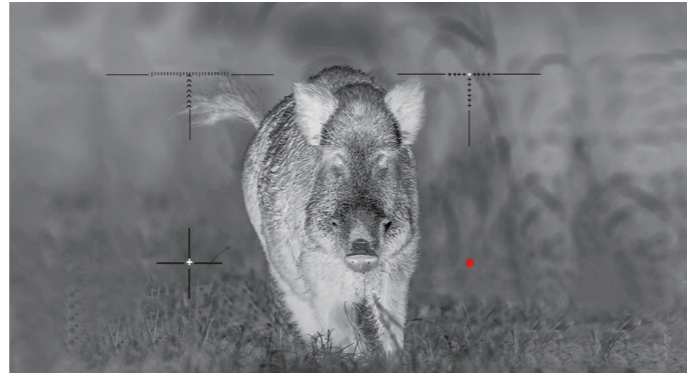
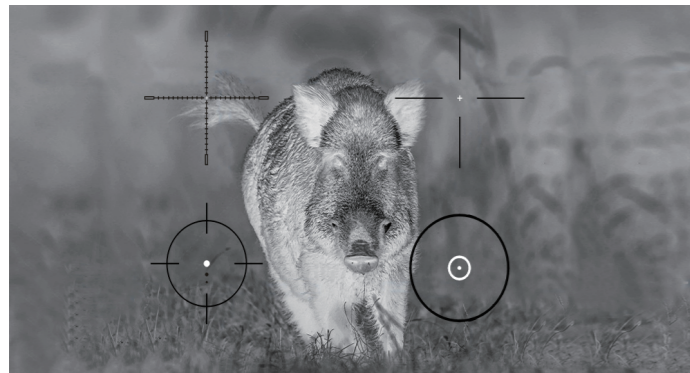
Built-in Precise Laser Rangefinder-GL35R

The built-in range-finding module features a range of 10-1,000m with ± 1 m accuracy up to 1km. The integrated, precision laser rangefinder provides accurate range-finding in two modes - Single Time Measurement and Scanning mode. Scanning mode allows the shooter to adjust quickly to changing distances for better shot placement.



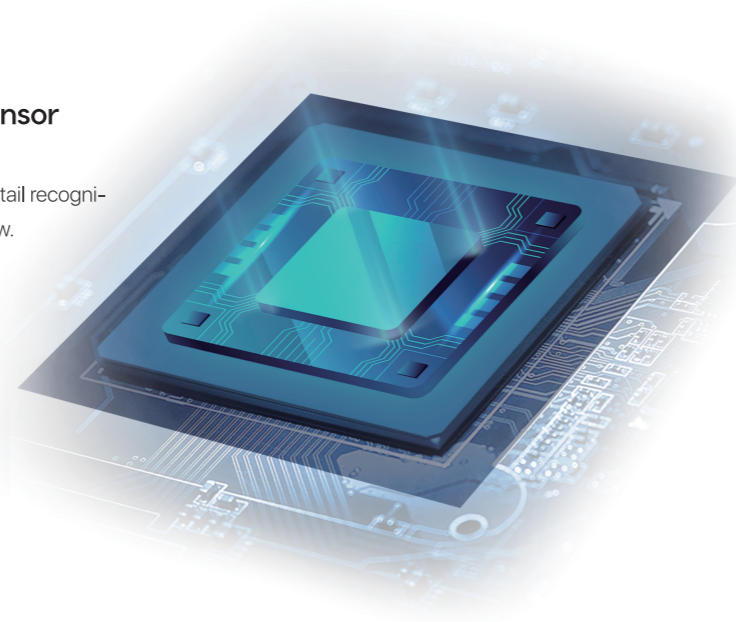
Multiple Different Reticles

To satisfy different hunting requirements of users, 7 (GL35) or 8 (GL35R) different reticles are designed for users to choose from.



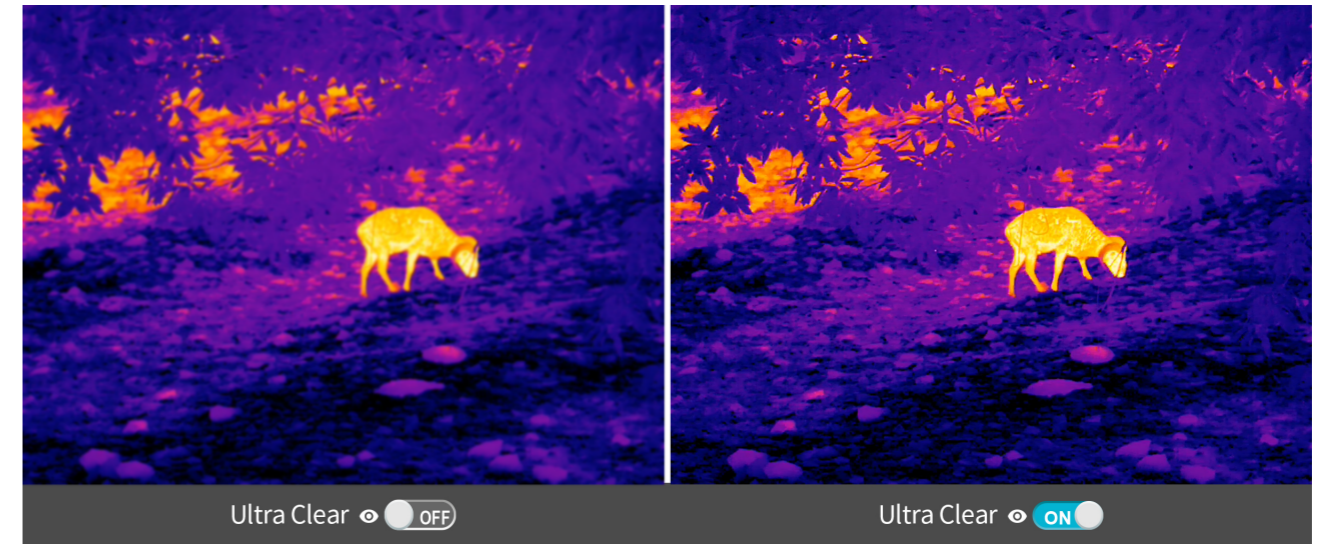
Highly Sensitive 12 μ m Thermal Imaging Sensor

Geni adopts the 12 μ m sensor with NETD ≤ 40 mK ensuring excellent detail recognition even in the hardest weather conditions when thermal contrast is low.



Ultra-Clear Mode

InfiRay's unique ultra-clear mode is especially for harsh environments, which makes Geni more sensitive and get more details.



Multiple Functions

The Geni series is built with memory of 32GB which can support to store video and pictures. The WiFi hotspot of the product supports simultaneous connection of four devices.

Long Endurance

The working time of a single GL35R reaches up to 8h, and GL35 reaches up to 10h.

New 1024*768 AMOLED Display

Geni is equipped with 1024*768 HD AMOLED display, delivering a crisp, rightly contrasted, vividly colored field of view, greatly improving the viewing experience.

